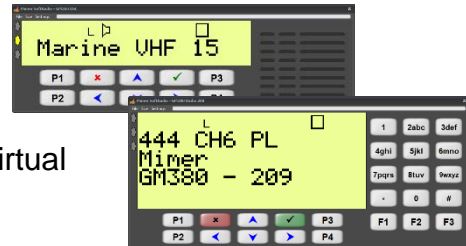


Cable Kit 3016 Interface 3009/03

Mimer SoftRadio - Motorola GM-series with virtual control head

Remote functionality

This cable kit will together with the Mimer Network Interface give remote control of the radios audio and PTT functions and it will present a full function Virtual Control Head.



Radio programming

Usually no special programming is needed.

You might check the following:

- GPIO Pin #4 should be set to Ext Alarm, Low, if you want Mimer to react to selective calls.

Cable Kit

The red wire on the cable kit shall be connected to +12V and the black to ground.

Connection

The radio shall be equipped with a "Remote Head" the standard control head is not needed.

It will not work through the microphone port on the control head!

Remote Mount Kit:

- GM380/1280: RLN4780
- GM160/360/660 & CDM1250: RLN4802

Radios

The kit will work with the radios above and their American and Asian equivalents, please see webpage for details: www.lse.se/gm

It will not work with GM340 and its equivalents w/o display.



Interface setting

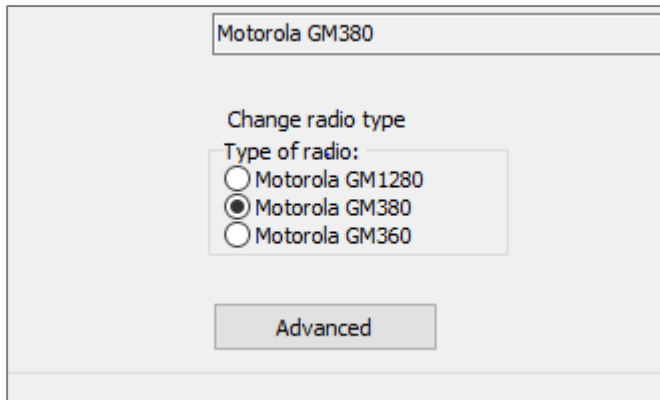
In the program “Mimer Interface Setup” you need to specify what type of radio you interface.

The software shows the European names of the radio types.

The GM380 is also known as GM398 and GM399.

The GM1280 is also known as MCX780.

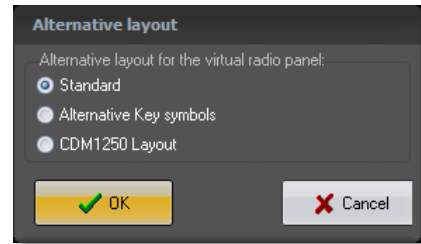
All versions of the GM360, see next page.



Different versions of the GM360

Around the world there are some different versions of basically the same radio. There is a setting in SoftRadio that will give the right look on the keypad of the Virtual Control Head.

You will find it under “Settings” on the Virtual Control Head.



Europe

GM360/GM160/GM660

Standard

Asia

GM338/GM339/MCX760/GM338LS

Use Alternative

Latin America

PRO7100/PRO7200

Use Alternative

PRO7100

Use CDM1250

North America

CDM1550/CDM1550LS+

Use Alternative

CDM1250

Use CDM1250



Standard layout



Alternative layout



CDM1250

The CDM1250 was not available in versions from 4.0 – 4.0.17.20.

It is back again from version 4.0.17.21.

Please ask if it is a requirement and you have the wrong SoftRadio release.

Virtual Control Head functions

