

Cable Kit 3022 Interface 3009/16

Mimer SoftRadio - Motorola MotoTrbo DM360X/DM460X

(DM4600 AKA: XPR5550, XPR5580, DGM5500, DGM8500, XiR M8660, XiR M8668)
(DM3600 AKA: XPR4500, XPR4550, XPR4580, DGM6100, XiR M8260, XiR M8268)

Remote functionality

This cable kit will together with the Mimer Network Interface give remote control of the radios audio and PTT functions and it will present a full function Virtual Control Head on the operator PC.



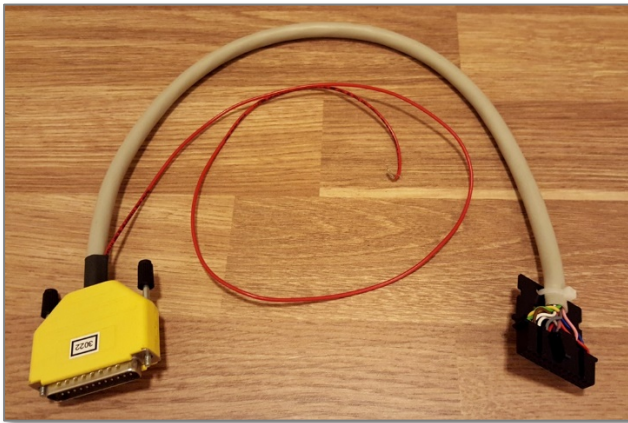
Radio firmware

We recommend the use of 2.30.01 or later in DM460X radios.
All versions of firmware in DM360X works.

There is a setting in the Network Interface to choose between DM360X or DM460X radios. See further down.

Cable Kit

The single red wire on the cable kit shall be connected to the same +12V source as the radio.



Cable kit 3022 for MotoTrbo

Please note

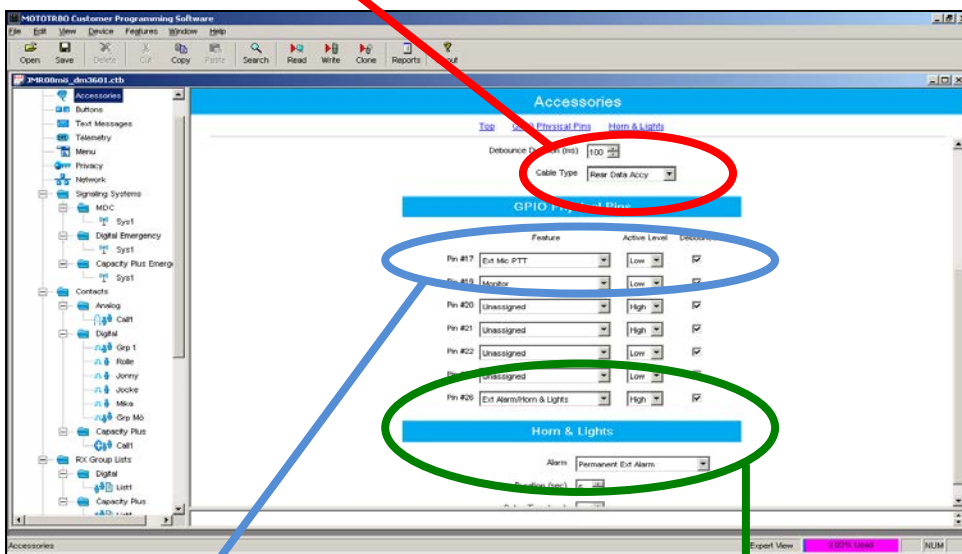
The remote function cannot work at the same time as the radios programming cable is attached. Disconnect the programming cable before connecting the Network Interface. And then reboot the radio.

Radio settings

One setting has to be changed in the radio for Mimer to get access. All other settings are default but might need to be checked if something is not working as intended.

Cable Type

The setting to change is “Cable Type” on the Accessories page:
Set to **“Rear Data Accessory”**



Microphone

GPIO Pin #17 should be set to Ext Mic PTT, active Low.

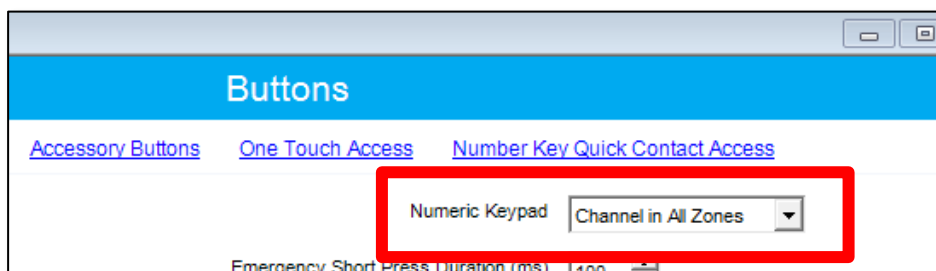
External Alarm

GPIO Pin #26 should be set to Ext Alarm, High, and Alarm to “Permanent Ext Alarm” if you want Mimer to react to selective calls.

Keypad use



The keypad on the Virtual Control Panel, on DM460X, can be used for channel change. This is practical if you have many channels and don't want to use the arrows to step up/down.

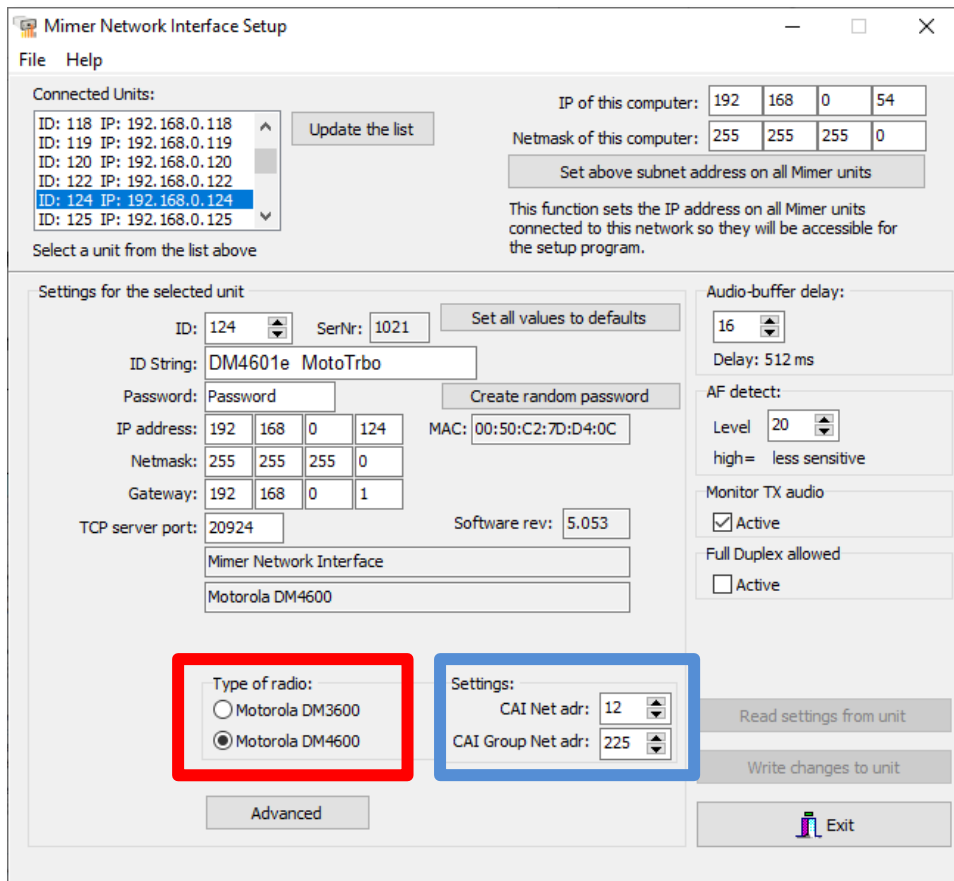
Program “Numeric Keypad” to “Channel” under the “Buttons” menu.



Interface settings

In “Mimer Network Interface Setup” there are two extra settings for MotoTrbo radios.

- You need to set the type of radio you are connecting, the old DM3600 series or the new DM4600 series. 
- If you are using a non-default type of DMR network, you also need to set the CAI Network Address. This is very seldom needed. 



Mimer Network Interface Setup

File Help

Connected Units:

ID: 118	IP: 192.168.0.118
ID: 119	IP: 192.168.0.119
ID: 120	IP: 192.168.0.120
ID: 122	IP: 192.168.0.122
ID: 124	IP: 192.168.0.124
ID: 125	IP: 192.168.0.125

Update the list

IP of this computer: 192 168 0 54

Netmask of this computer: 255 255 255 0

Set above subnet address on all Mimer units

This function sets the IP address on all Mimer units connected to this network so they will be accessible for the setup program.

Select a unit from the list above

Settings for the selected unit

ID: 124 SerNr: 1021 Set all values to defaults

ID String: DM4601e MotoTrbo

Password: Password Create random password

IP address: 192 168 0 124 MAC: 00:50:C2:7D:D4:0C

Netmask: 255 255 255 0

Gateway: 192 168 0 1

TCP server port: 20924 Software rev: 5.053

Mimer Network Interface

Motorola DM4600

Audio-buffer delay: 16 Delay: 512 ms

AF detect: Level 20 high= less sensitive

Monitor TX audio Active

Full Duplex allowed Active

Type of radio: Motorola DM3600 Motorola DM4600

Settings: CAI Net adr: 12 CAI Group Net adr: 225

Read settings from unit

Write changes to unit

Advanced

Exit

Virtual Control Head functions

