

Cable Kit 3033/02 Interface 3009/22

Mimer SoftRadio – Universal kit

Remote functionality

This cable kit will together with the Mimer Network Interface give remote control of the radio's audio and PTT functions.

The interface has line transformers in/out to fit most equipment with line levels, -10dB over 600 Ohm.

There are also I/O connections, where commands from SoftRadio can trigger an output and an input can give a status at SoftRadio.

Alternatively, other products than radios can be connected, for example a PA system.

PTT is keyed on the Tx line.

Power

Connect the red/black cables to a power source. Typically, 12VDC, 0,5A. Red is positive and black is negative.

Audio output

Preferably connect the outgoing audio from the radio to an output with a fixed level that is not affected by the setting of a volume control on the radios front panel. If that is not possible, set the volume control to 50-60% level.

Audio level adjustment

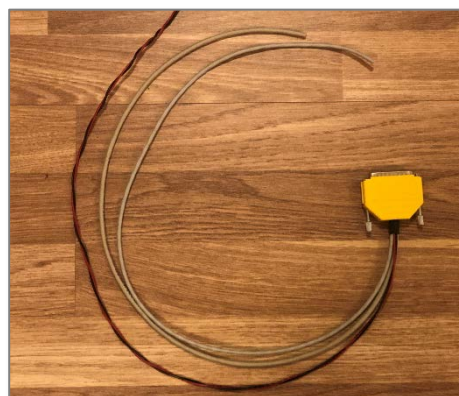
The audio levels in/out between radio and Network Interface can be set in the software "Network Interface Setup". See screen shots on next page.

Before changing the audio levels in the interface, it is important to be sure that the operator PC's microphone level is correct. Use the tool "Audio Levels" that can be found under "View" in Mimer SoftRadio.

Set the PC microphone level so that the level bar is normally green and hits the top (red) when you speak at a high level.

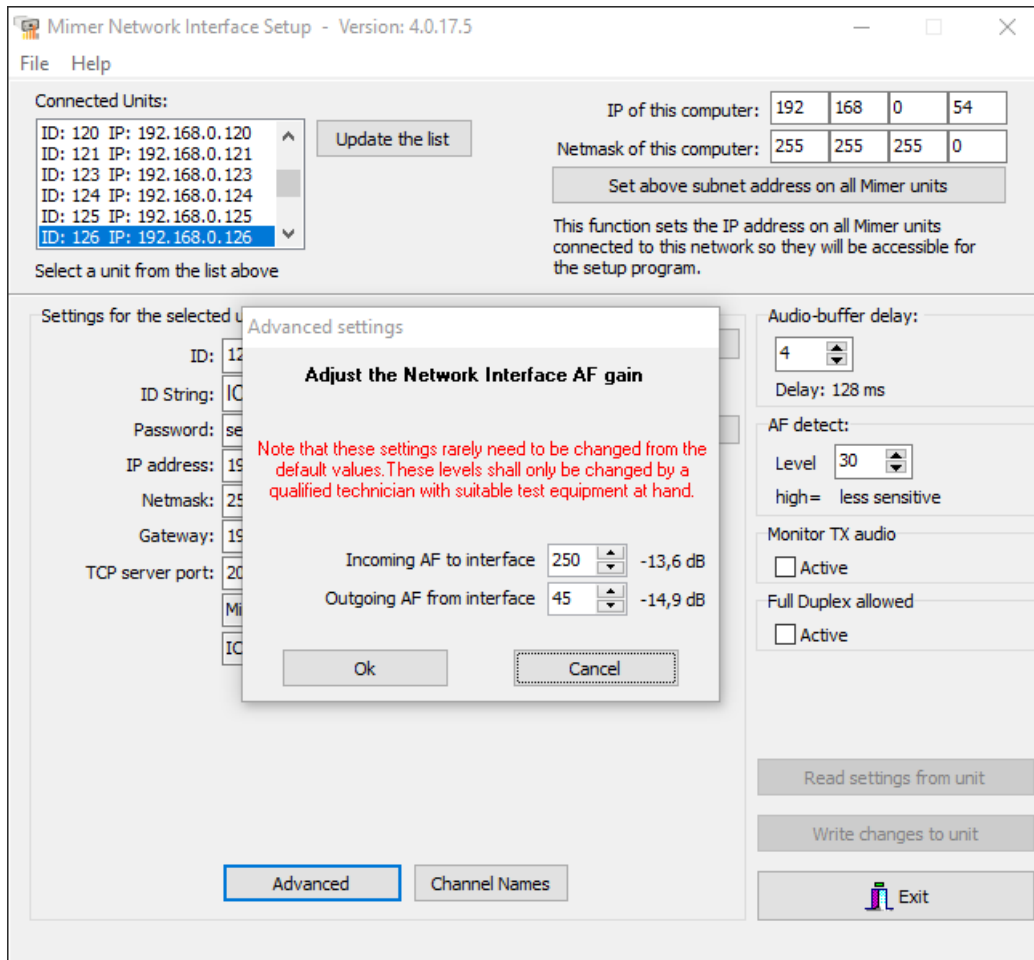
There is more reading on audio settings in the Setup Guide for Mimer SoftRadio and on the web page:

www.lse.se/audio

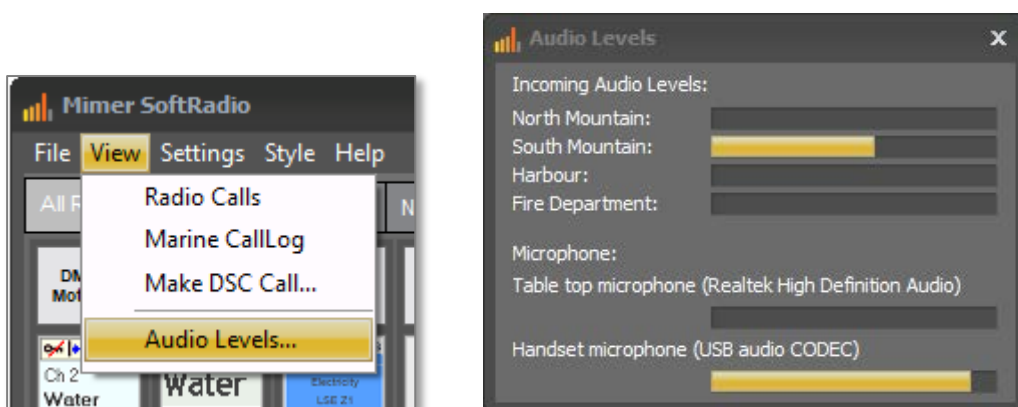


Cable Kit 3033/02

Screen shots

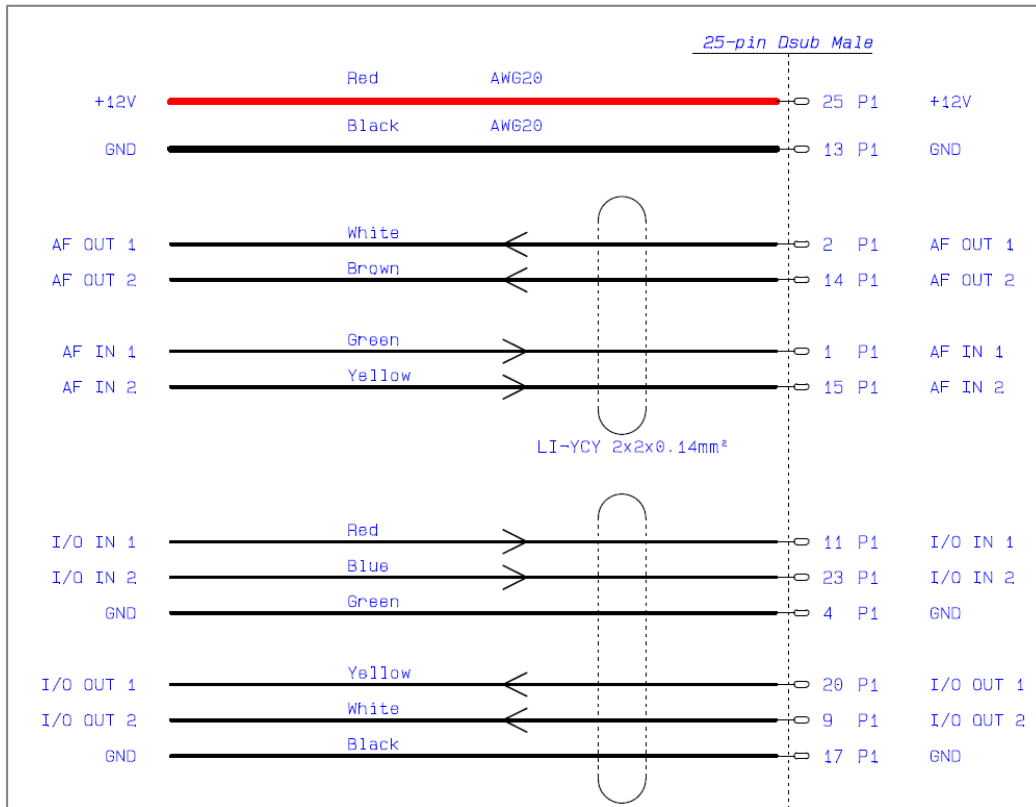


The key "Advanced" above brings forward the menu for setting of audio levels in/out of the Network Interface.



Select View and Audio Levels to find the peak meters.

Cable connection



Usage of the I/O's

The I/O inputs will send a message to SoftRadio that can be interpreted and handled there.

SoftRadio can also send a message to the interface that triggers one of the outputs.

In SoftRadio the option Custom Functions Panel is needed together with scripts special made for each needed function.

Inputs

On = 2.5-30V / Off = 0-0.8V, 47kohm impedance to ground.

Optional reverse-current protected 5.6kohm pull-up to +5V

Open collector outputs

Max 30V / Max 10mA. Reverse-current protected 5.6kohm pull-up to +5V.

Pull-up can optionally be disconnected.