

Cable Kit 3033/04 Interface 3009/10

Mimer SoftLine

Remote functionality

Two interfaces and two cable kits will give a virtual 4-wire line connection over IP.

The interface has line transformers in/out to fit most equipment with line levels, -10dB over 600 Ohm.

There is also a virtual RS232 connection between the two interfaces.

Alternatively, other products than radios can be connected, for example a PA system.

Power

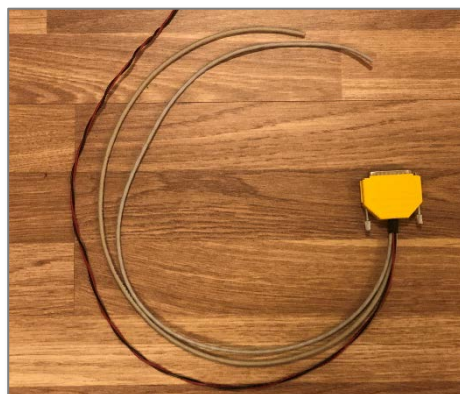
Connect the red/black cables to a power source. Typically, 12VDC, 0,5A. Red is positive and black is negative.

Audio output

Preferably connect the outgoing audio from the radio to an output with a fixed level that is not affected by the setting of a volume control on the radios front panel. If that is not possible, set the volume control to 50-60% level.

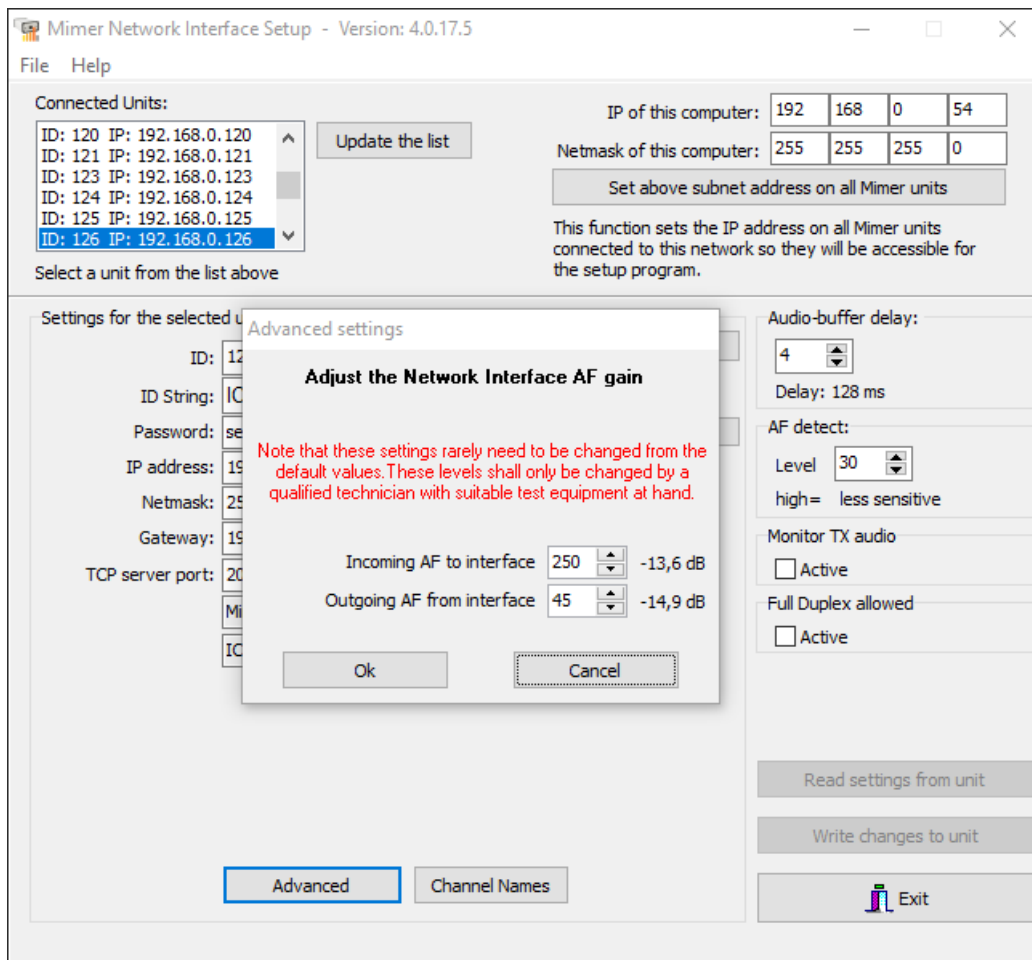
Audio level adjustment

The audio levels in/out between radio and Network Interface can be set in the software "Network Interface Setup". See screen shots on next page.



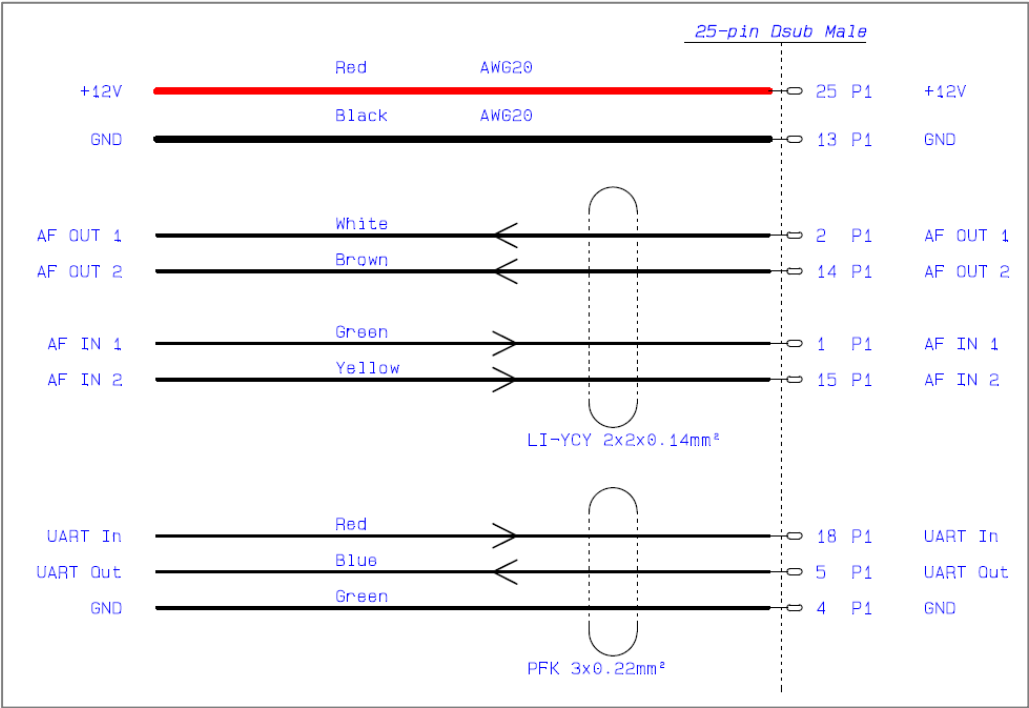
Cable Kit 3033/04

Screen shots



The key "Advanced" above brings forward the menu for setting of audio levels in/out of the Network Interface.

Cable connection



Usage of the RS232

Each interface has a connection for RS232. They will together work as a virtual link over the IP connection.

The baud rate can be set with the setup software, 1200-115200 Baud.