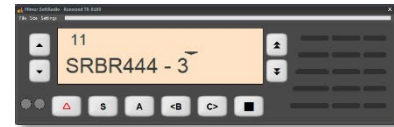


Cable Kit 3116 Interface 3009/33

Mimer SoftRadio – Kenwood TK-7360/8360

Remote functionality

This cable kit will together with the Mimer Network Interface give a virtual control head with full keypad functionality, most of the display and remote control of the radios audio and PTT functions.



Radio programming

GPIO Pin 10 shall be programmed for external PTT active low.
Also COM-port 1 needs to be active with PC-protocol version 2.
See attached screen shots for details.

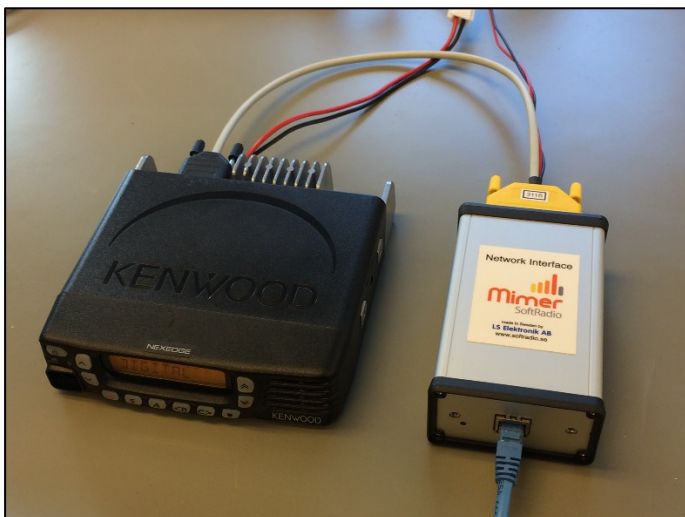
If you have many channels programmed in the radio it is a good idea to be able to select them from the keypad. See tip on page three.

Apart from that, no special programming is needed in the radio.

Cable Kit

The red and black wires shall be connected to 12VDC, red is positive.

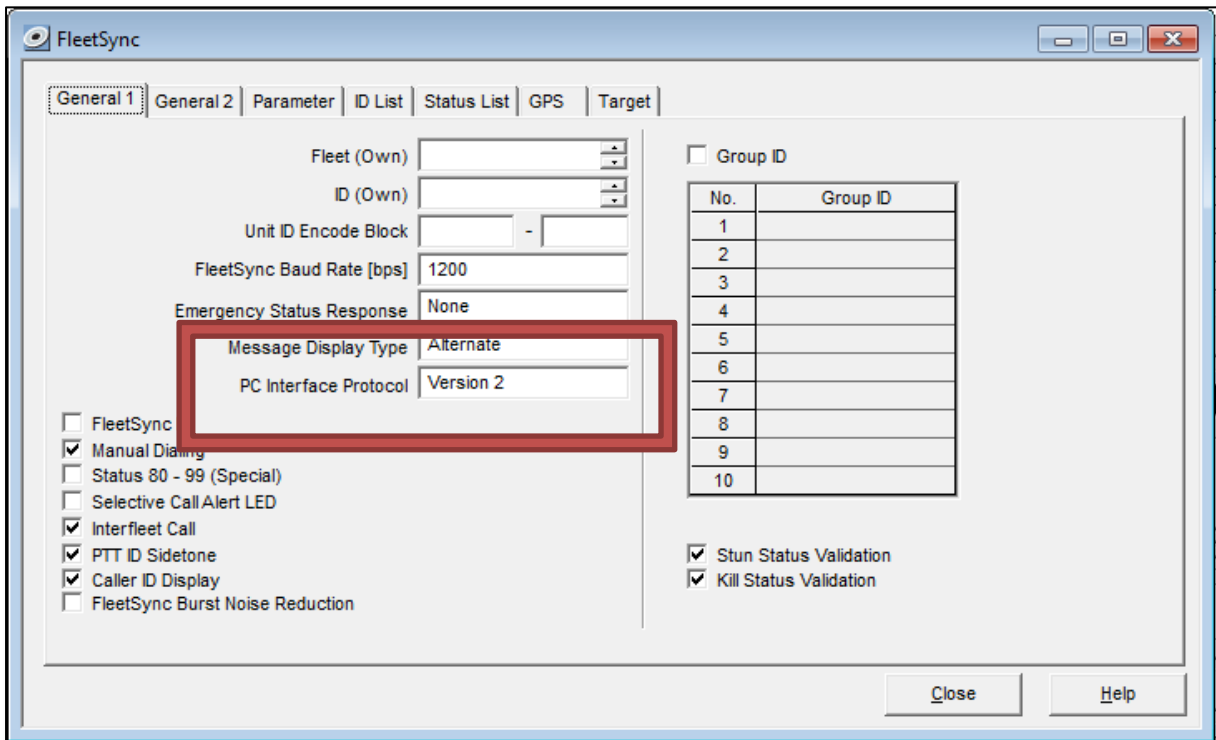
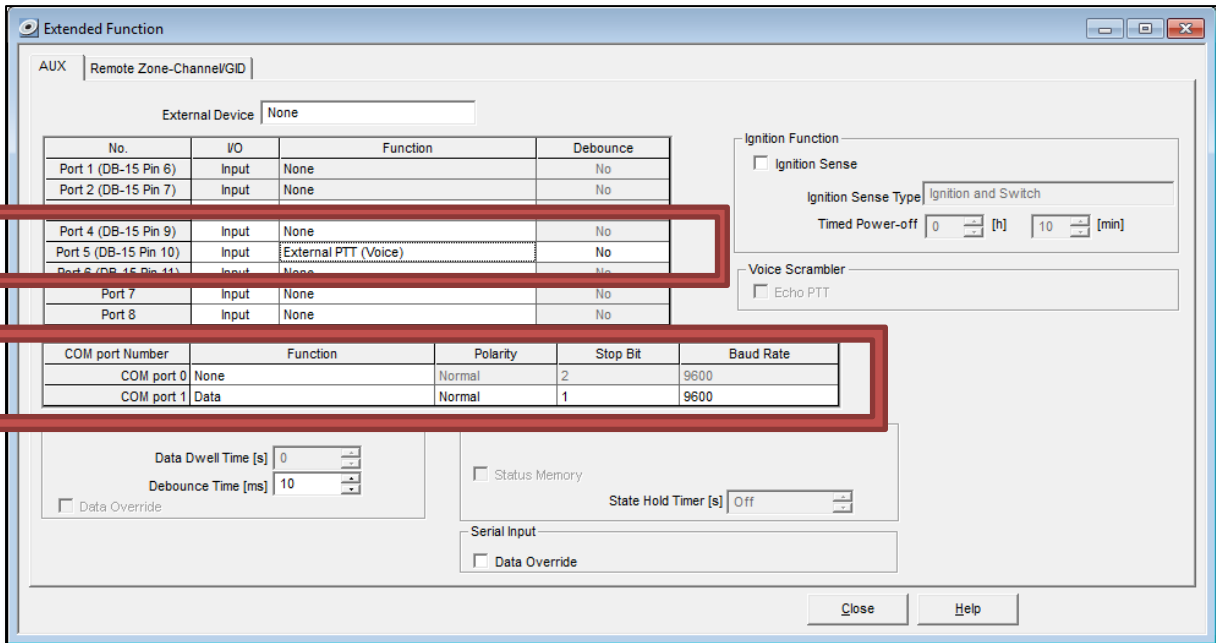
The network interface consumes max 0,3A.



*Network Interface connected to a
Kenwood radio*

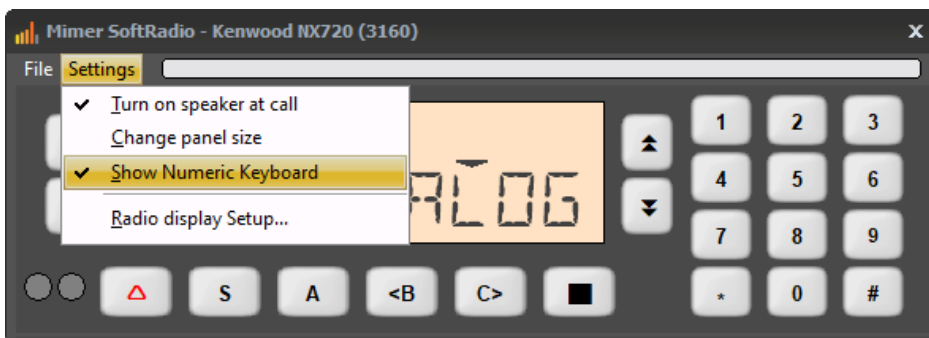
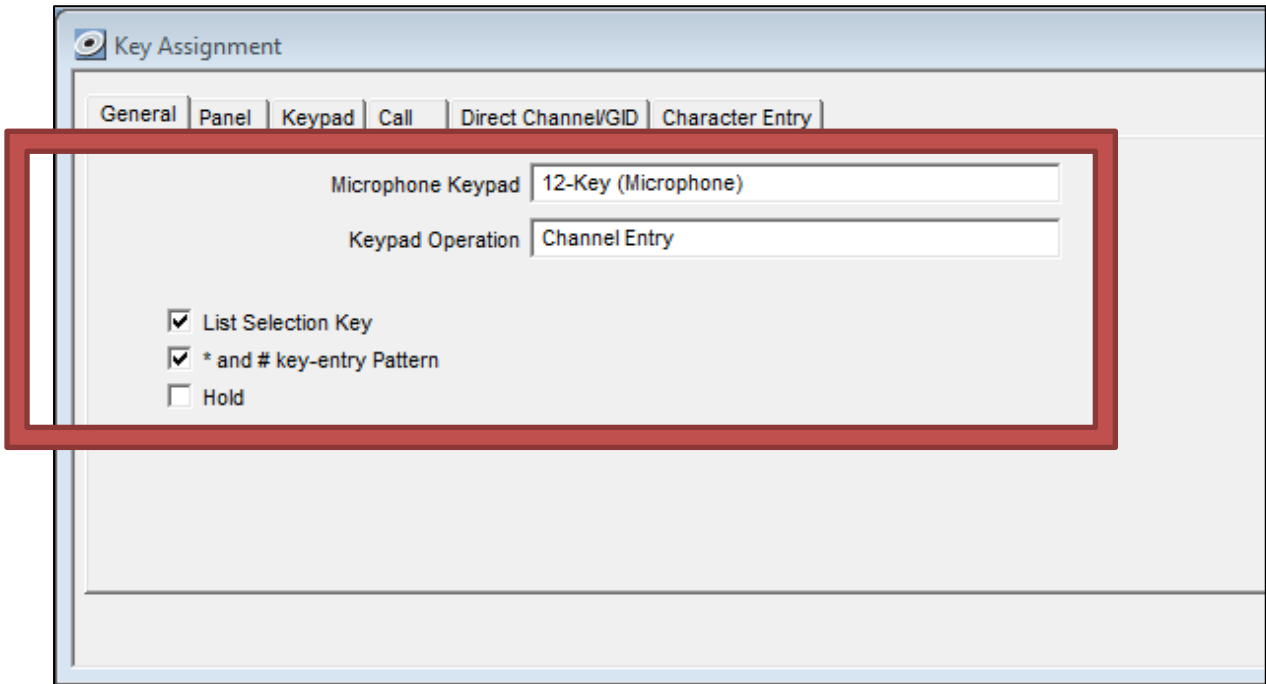
Screen shots from the radios programming software

PTT and Data settings



Keypad settings

If you have many channels programmed it can be a good idea to activate the keypad on the virtual control head and to program the radio for “Channel Entry” through the keypad. You set this as “Microphone Keypad” since it is the keypad on the keypad microphone that SoftRadio mimics.



Select to show the keyboard on the Virtual Control Head.

If the radio is programmed as above: To select a channel you just hit * and the channel number or # and the channel number.