

Connecting radios all over the world

Installations

Mimer SoftRadio is a system to remote control two way radios over LAN, WAN or the Internet. The dispatcher uses a standard Windows PC and PC audio accessories.

Radios and other equipment are connected to the IP network through interfaces. Often the installation of the radio and the network interface are best done in a 19" standard rack. For this purpose we build ready made kits including a power supply. Most common are open shelf units, but we also build closed rack units, when that is a better option.



Icom marine radio installed on a 19" 3U shelf

In most cases we install a 230VAC/12VDC power supply on each shelf. But in some installations a common battery back up for a whole cabinet is preferred. Each shelf will then be connected through 12V.

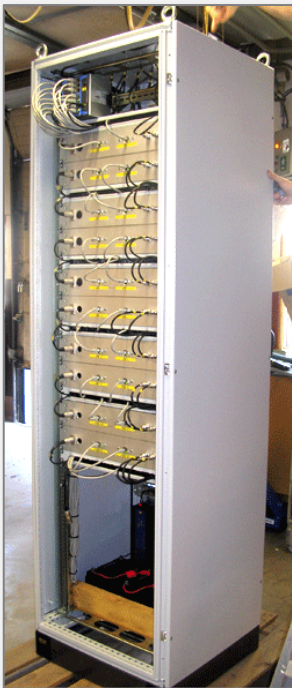
Other installations include wall mount cabinets and also building complete systems in rack cabinets.

Markets

- Public Safety
- Transportation
- Airports
- Offshore
- Industry



Front side of closed rack unit



*Left: Rack cabinet with 20 radios,
battery back up and IP switch.*



*Above: Radio and interface
built into a wall cabinet.*