

*Connecting radios all over the world*

## Mimer MapView

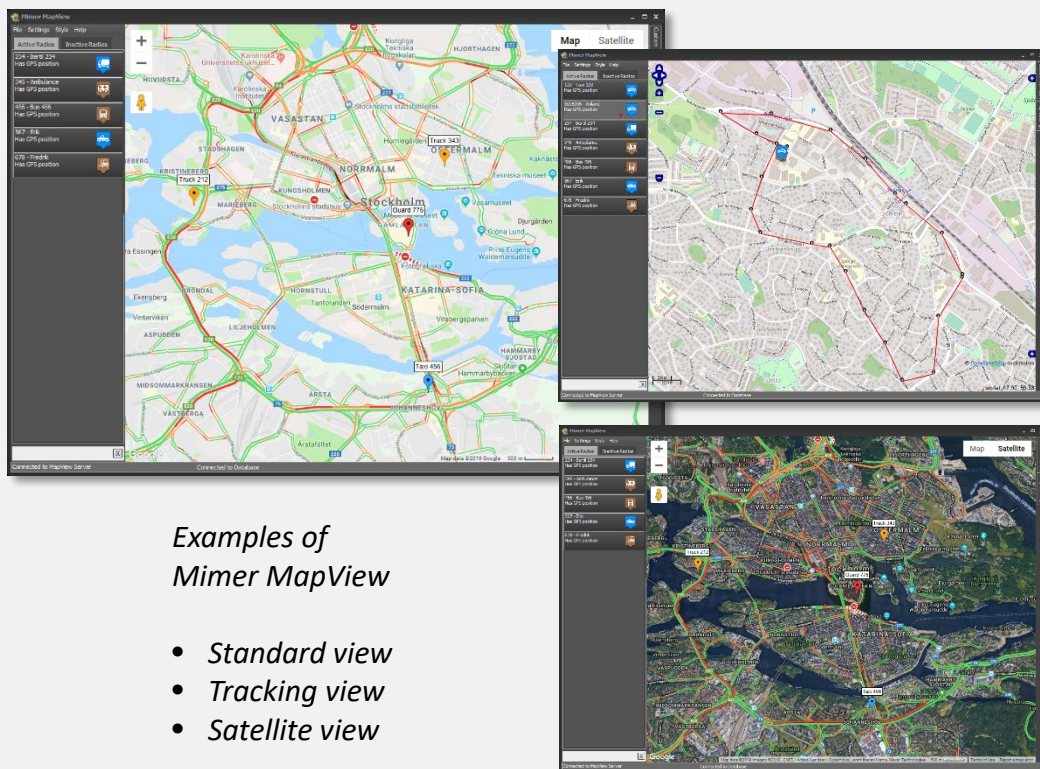
**Shows where your resources are**

**Mimer MapView** is an option to Mimer SoftRadio that shows the positions of your radio units on a PC using online maps or your own offline maps.

Each radio unit will be shown with an icon on the map. The operator can easily centre and zoom the map on one unit. He can also display more information about the unit, with a simple click.

Incoming emergency alarms will be highlighted on the map and the movement of each radio can be tracked and traced. A private call or a text message to a radio can be sent through a click on the radio icon.

Fixed points of interest can be marked on the map, for example the location of your office or an important customer.



*Examples of  
Mimer MapView*

- *Standard view*
- *Tracking view*
- *Satellite view*

# Mimer MapView

Shows where your resources are.



## Emergency handling

When an emergency alarm is received, the map will pan and zoom into the area where the radio unit is located.

The unit in emergency is also placed at the top of the left hand list and marked in red for high visibility.

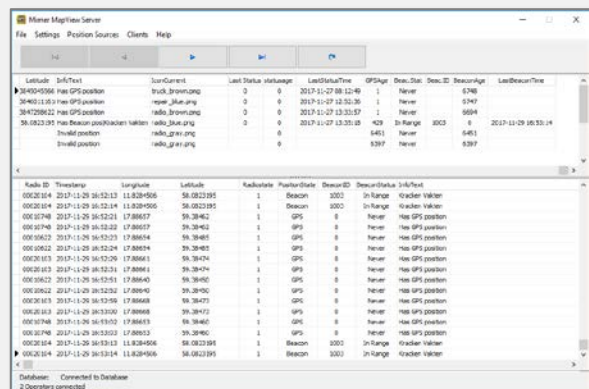
Radio beacons can be used when GPS signal is low, for example in underground areas.



## MapView Server

All radio units are recorded in a data base. Here all information on names, radio ID:s, map icons, history of positions etc. are stored.

The server application can be run on the operator PC in small systems but is recommended to be installed on a separate server in larger systems.



## Markets

- Public Safety
- Transport
- Industry
- Security
- Courier firms
- Marine

Demo software is available, please ask.

**LS Elektronik AB**

[www.lse.se](http://www.lse.se)

+46-8 36 42 25

More information available here:  
[www.lse.se/mapview](http://www.lse.se/mapview)