

Connecting radios all over the world

Remote control your Motorola two way radio with VoIP audio

Mimer SoftRadio is a system to remote control two way radios over LAN, WAN or the Internet. The operator uses a standard Windows PC and standard audio accessories.



Mimer SoftRadio with four Motorola radios connected

Each operator can handle many radios and each radio can be remote controlled by many operators.

Through the use of Virtual Control Heads, the remote control of many radio types includes not only audio and PTT functions, but also channel change, text messaging and more.

Optionally all audio can be recorded and calls can be cross patched between radio systems. Also phones and intercoms can be operated from the same PC.



Virtual Control Heads

The system allows for mixing of radio types at the same operator, so that analogue radios (e.g. Marine and Airband) and digital radios (e.g. DMR and Tetra) can be controlled.

Read more about **Mimer SoftRadio** on the web pages. www.lse.se

Airports and Airlines



Airports are heavy users of two way radio. They have several radio systems to handle, both for ground traffic and for air traffic.

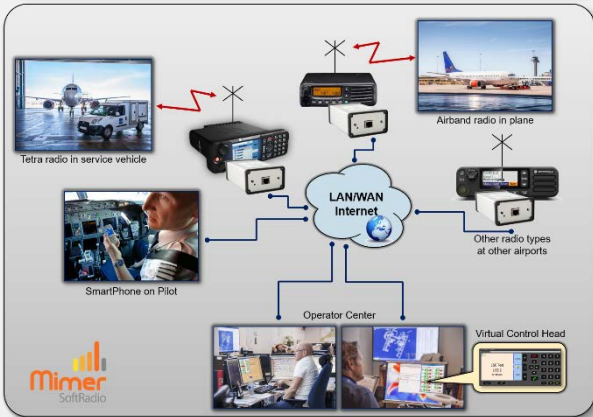
Scandinavian Airlines System have set up a large centre outside Stockholm, with **Mimer SoftRadio**, that communicates with both ground personnel and close by aircrafts at all airports they operate in Scandinavia.

This means a mix of radio systems since each airport has its own ground radio system, from analogue to Tetra. And also the traditional airband radios on VHF-AM.

All conversations are recorded on a **Mimer VoiceLog** system.

Read more about the airport users of SoftRadio on the web page.

www.lse.se/airports



Taxi Dispatch



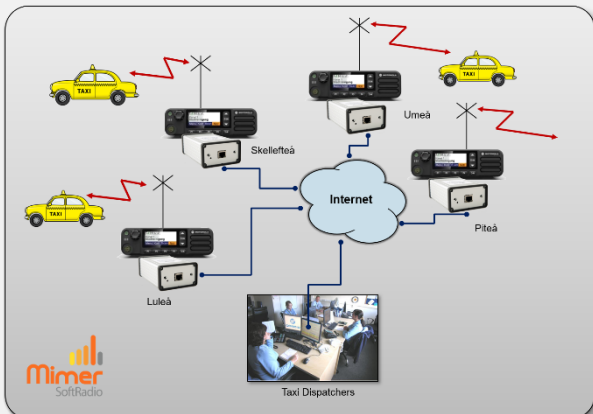
In earlier days each small town had their own taxi company working locally with their own radio system. Today the companies are brought together working through one big dispatch centre. The dispatchers needs to reach cars in a large area covering many towns.

The coverage is arranged through the use of radios connected over the Internet to **Mimer SoftRadio** and each operator can select to use just one radio in one town, or a number of radios.

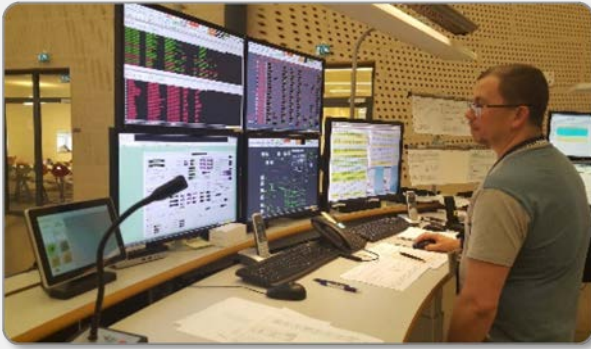
With the help of **Mimer RadioCalls** the cars calling in are placed in a queue and are easily called back by the operator.

Read more about transport companies using SoftRadio on the web pages.

www.lse.se/users

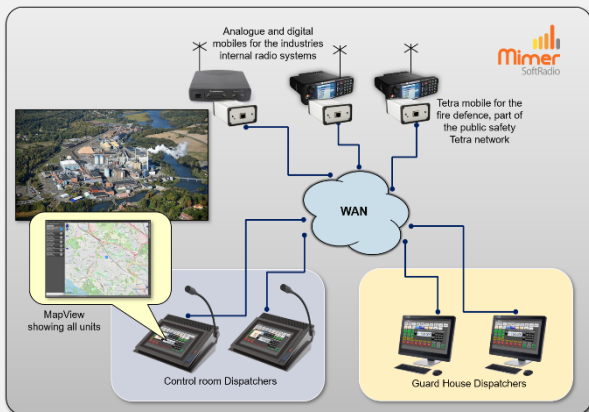


Petrochemical industry



Large industries often have many hundreds of portable radios. They use old analogue and modern DMR or Tetra networks plus cooperation with ships over marine radio and fire departments over a public safety net.

All of the systems can be handled from the same **Mimer SoftRadio** dispatcher.



Mimer MapView is an add on to the voice communication. MapView will show all connected units on a map of the industry or surrounding area. Units in alarm mode will flash up on the screen and the map will zoom in on them.

Read more about MapView for SoftRadio on the web pages. www.lse.se/mapview

Command and Control Vehicles and Ships



All “blue light” users have command and control vehicles and ships that work close to an incident site.

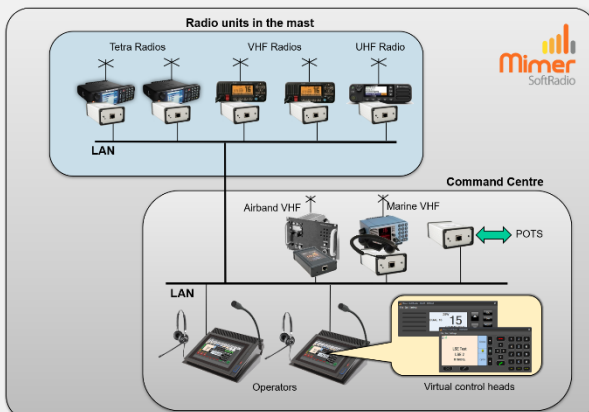
In the vehicles there are a heavy use of radio communication as well as phones, intercom and more.

By using **Mimer SoftRadio** the operators can have the same headset and the same touch screen for all communications.

By using a 4G modem the vehicles radios can be remotely connected to other operators and the vehicle operators can be connected to other radios.

Read more about the users of SoftRadio in vehicles on the web pages.

www.lse.se/vehicles



With all options and extras there is a solution for almost every radio user

Options and accessories

There is a long list of radios that can be controlled and also a long list of options to the system to make it fit all types of users. For example:

- CrossPatch
- GroupSend
- Phone connect
- Intercom
- Marine Calls
- Local CallLog

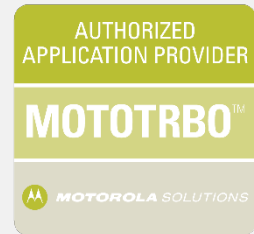
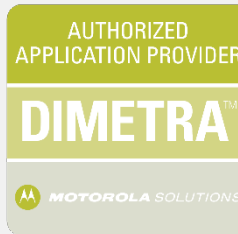
Read more about the options on the web pages.



- *Heavy duty table top microphone*
- *Dedicated touch screen computer*

To make the system complete there are also servers and other extra equipment, for example:

- VoiceLog – records all audio
- MapView – shows all users on a map
- RadioServer for IP over satellite



Users around the globe



Mimer SoftRadio is used in over 50 countries around the globe. At the moment available in ten languages.

- Public Safety
- Airports/Airlines
- Transport
- Harbours/Rivers
- Coast Guard
- Industry
- Wind Power farms
- Security

Read more about the users of SoftRadio on the web pages. www.lse.se/users