

Mimer SoftRadio

Connecting radios all over the world



At **LS Elektronik** we build systems to remote control two way radios. We have been doing this for over 15 years and sold our systems in over 50 countries around the globe.



In this folder you can read more about our three primary products. More are found on www.lse.se and don't be afraid to ask for other solutions.

Mimer SoftRadio

Remote control over IP with a PC dispatcher.

Sirius Remote Panel

A rugged remote control head for the MotoTrbo radios.



Mimer X-Link

Cross patching of any two local radios.

LS Elektronik AB



Mimer SoftRadio

Remote control your two way radio with VoIP audio

Mimer SoftRadio is a system to remote control two way radios over LAN, WAN or the Internet. The operator uses a standard Windows PC and standard audio accessories.

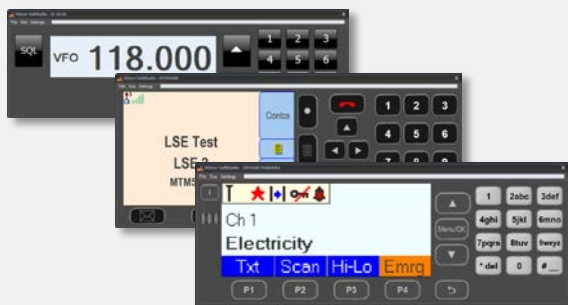
Each operator can handle many radios and each radio can be remote controlled by many operators.

Through the use of Virtual Control Heads, the remote control of many radio types includes not only audio and PTT functions, but also channel change, text messaging and more.

The system allows for mixing of radio types at the same operator, so that analogue radios (LMR, Marine and Airband) and digital radios (DMR and Tetra) can be controlled. Phones and intercoms can also be operated from the same operator PC.

Optionally all audio can be recorded and calls can be cross patched between radio systems.

Read more about the users of SoftRadio on the web pages. www.lse.se/users

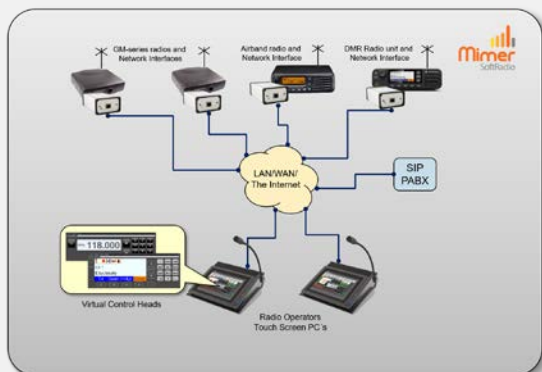


Virtual Control Heads for different radio types

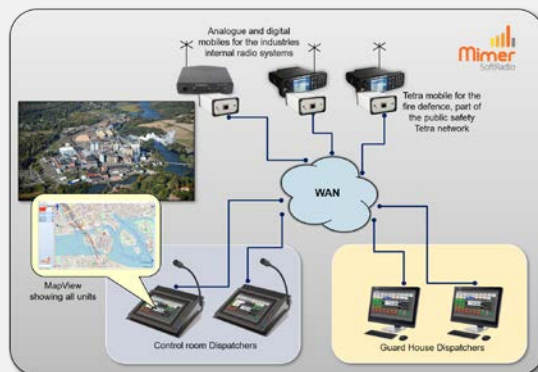


Mimer SoftRadio with three radios, voice log and SIP phone connected

There is a system configuration for almost every user



Example of two users remote controlling analogue, DMR and Airband radios plus using a SIP phone connection



Example of an industry system with several radio types and GPS positioning.



Sirius Remote Panel

For tough users in rough environments!

The **Sirius Remote Panel** is a compact and rugged control head for Motorola MotoTrbo radios.

It gives touch screen remote control of the radios standard functions as well as a quick access menu with the basic functions of channel/talkgroup change, volume control and the screens brightness control.

The panel is built for use in environments where the standard radio control head might not be suitable. For example when driving a Motorcycle, Quad bike, Snowmobile or a RIB boat.



Key Features

- **Very rugged** for all weathers
- Environment protection IP 67
- Usage temperature
-20° to +70°C (-4° to +158°F)
- Storage -30°C
- Shock and vibration proof
- Readable in all light conditions
- Compact size: 90x62x26mm
- Easy to use
- Touch screen operated
- Usable with gloves on
- Radio infrastructure independent
- Interactive menus
- Works in parallel with the radio's standard control head



www.lse.se/sirius

In order to work under such conditions the panel is dust and water proof and it handles very high and low temperatures. The standard mobile radio can be mounted well protected in a saddle bag or behind a panel.

The panel has a transfective display that is highly readable in bright sunlight and it can be dimmed very low so that the back light will not blind you at night. The touch panel is usable with your gloves on.

There are different back covers for the panel in order to mount it at different places, for example on an flat surface, from the rear of a panel or on a handlebar. Special back cover versions can be designed to fit any customers' specific needs.





Mimer X-Link

Patch together any two radios

Mimer X-Link gives you the ability to cross patch almost any two radios. Incoming audio on one radio will be re-transmitted on the other radio and vice versa.

In many cases radio channels/talk groups from different systems needs to work together. For example Airband channels together with Ground channels on an airport, or Harbor channels together with Marine channels at a port.

The Interface:

The heart of the X-Link is a small interface that connects to both radios. The interface has settings for audio levels and detection of reception as well as triggering of the PTT.

- Standalone system, when configured, it runs by itself
- Handles analogue radios as well as digital radios with PEI interfaces
- Patches any two types of radios

Cross connect "anything":

- Analogue radios on VHF to UHF
- Airband to Ground radio
- Analogue radio to a DMR radio
- Analogue radio to a Tetra radio
- Tetra radio to an IP-radio
- Two Tetra radios
- PA-system to radio

www.lse.se/x-link



X-Link Interface

Examples of use:



LS Elektronik AB

www.lse.se
+46-8 36 42 25

LS Elektronik AB has over 25 years of experience of building rugged equipment for radio systems.