

*Connecting radios all over the world*

## Remote control your two way radio with VoIP audio

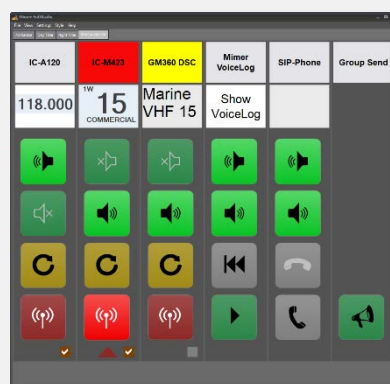
**Mimer SoftRadio** is a system to remote control two way radios over LAN, WAN or the Internet. The operator uses a standard Windows PC and standard audio accessories.



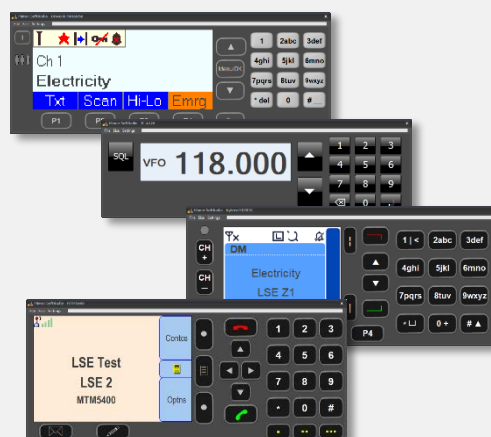
Each operator can handle many radios and each radio can be remote controlled by many operators.

Through the use of Virtual Control Heads, the remote control of many radio types includes not only audio and PTT functions, but also channel change, text messaging and more.

Optionally all audio can be recorded and calls can be cross patched between radio systems. Also phones and intercoms can be operated from the same PC.



*Mimer SoftRadio with three Radios, VoiceLog and phone connected*



*Virtual Control Heads*

The system allows for mixing of radio types at the same operator, so that analogue radios (e.g. Marine and Airband) and digital radios (e.g. DMR and Tetra) can be controlled.

Read more about **Mimer SoftRadio** on the web pages. [www.lse.se](http://www.lse.se)

# Airports and Airlines



Airports are heavy users of two way radio. They have several radio systems to handle, both for ground traffic and for air traffic.

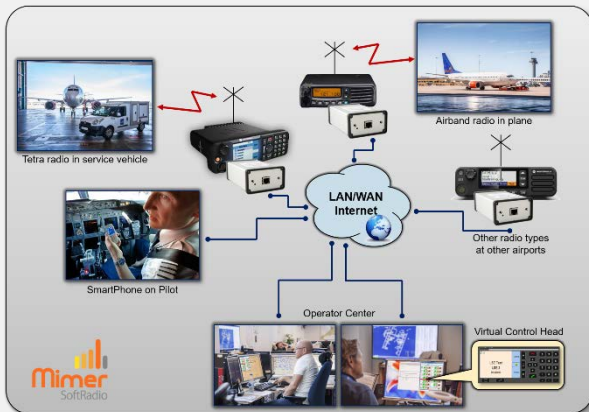
Scandinavian Airlines System have set up a large centre outside Stockholm, with **Mimer SoftRadio**, that communicates with both ground personnel and close by aircrafts at all airports they operate in Scandinavia.

This means a mix of radio systems since each airport has its own ground radio system, from analogue to Tetra. And also the traditional airband radios on VHF-AM.

All conversations are recorded on a **Mimer VoiceLog** system.

Read more about the airport users of SoftRadio on the web page.

[www.lse.se/airports](http://www.lse.se/airports)



# Taxi Dispatch



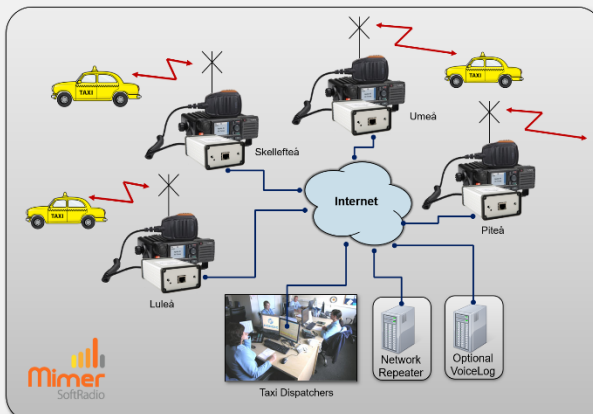
In earlier days each small town had their own taxi company working locally with their own radio system. Today the companies are brought together working through one big dispatch centre. The dispatchers needs to reach cars in a large area covering many towns.

The coverage is arranged through the use of radios connected over the Internet to **Mimer SoftRadio** and each operator can select to use just one radio in one town or a number of radios.

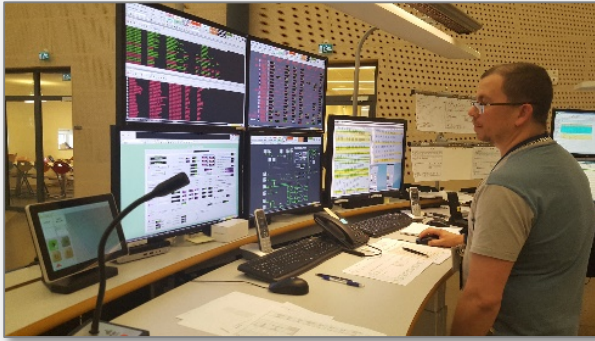
With the help of **Mimer RadioCalls** the cars calling in are placed in a queue and are easily called back by the operator.

Read more about transport companies using SoftRadio on the web pages.

[www.lse.se/users](http://www.lse.se/users)



# Petrochemical industry



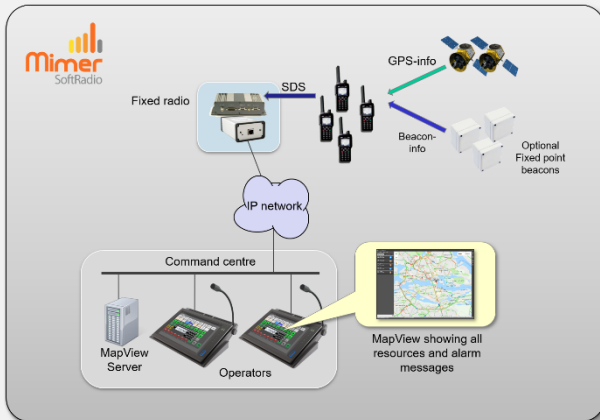
Large industries often have many hundreds of portable radios. They use old analogue and modern DMR or Tetra networks plus cooperation with ships over marine radio and fire departments over a public safety net.

All of the systems can be handled from the same **Mimer SoftRadio** dispatcher.

**Mimer MapView** is an add on to the voice communication. MapView will show all connected units on a map of the industry or surrounding area. Units in alarm mode will flash up on the screen and the map will zoom in on them.

In Sepura systems, fixed beacons can be used to make the indoor positioning more precise.

Read more about MapView for SoftRadio on the web pages. [www.lse.se/mapview](http://www.lse.se/mapview)



# Offshore industry



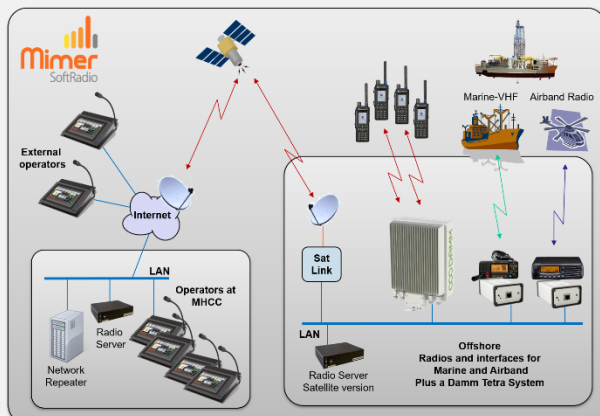
Both the oil and gas industry and the offshore windfarm builders needs to communicate from land based control centres to workers at the offshore installations.

With **SoftRadio** they can set up radios of different types at the offshore sites and be able to remote control the radios over an IP connection.

The IP connection can be fibre, microwave link or satellite. Giving the land based dispatchers the feeling of talking on a radio next to them, although the radio is far away out at sea.

Read more about the offshore users of SoftRadio on the web pages.

[www.lse.se/offshore](http://www.lse.se/offshore)



With all options and extras, there is a solution for almost every radio user

## Options and accessories

There is a long list of radios that can be controlled and also a long list of options to the system to make it fit all types of users. For example:

- CrossPatch
- GroupSend
- Phone connect
- Intercom
- Marine Calls
- RadioCalls

To make the system complete there are also servers and other extra equipment, for example:

- VoiceLog – records all audio
- MapView – shows all users on a map
- RadioServer for IP over satellite

Read more about the options and the accessories on the web pages.



*Heavy duty table top microphone with or without built in speaker*



*Dedicated touch screen computer*

## Users around the globe



**Mimer SoftRadio** is used in over 50 countries around the globe. At the moment available in nine languages.

- Public Safety
- Airports/Airlines
- Transport
- Harbours/Rivers
- Coast Guard
- Industry
- Wind Power farms
- Security

Read more about the users of SoftRadio on the web pages. [www.lse.se/users](http://www.lse.se/users)