

X-Link Cable kit 3352

**Connect a Sepura SRG/SCG through the
Line In/Out to Mimer X-Link MK2**

Also refer to the X-Link setup manual.

Interface Power Supply

12VDC / max 0,3A.

Power connection through separate cable delivered with the interface. Red is positive.

Radio Setup

The standard control head does not need to be fitted to the radio.

The radio shall be equipped with the option for Line In/Out.

Radio programming

- External Digital Inputs:
Tranceiver ext. Digital Input 1, + edge: Line In 2 PTT Off
Tranceiver ext. Digital Input 1, - edge: Line In 2 PTT On
- External Digital Outputs
Digital Output 1: Active while Line Out Enabled
- Audio Presentation
Line Out Source: Rx Audio Only
Line Out Operation: When Line Out Source Audio Present

You should also program a fixed audio level, see programming tips further down.

Connection

The cable kit is connected in a control head connector on the radio unit or through the Sepura 300-00066 Cable.

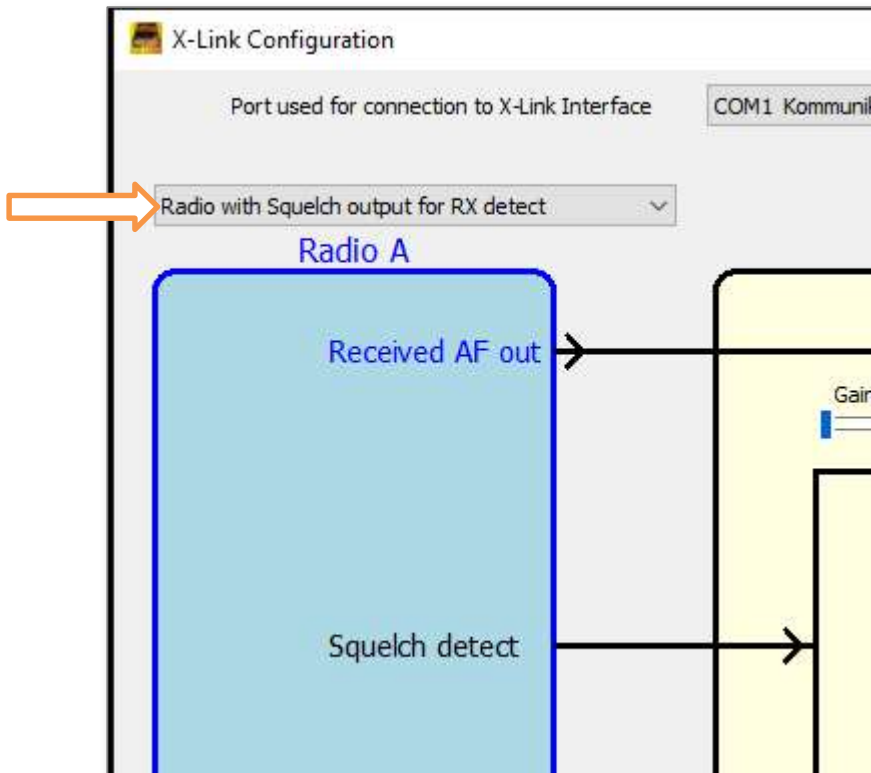
When using a SCG22, also use the Sepura 300-02007 Adapter Cable.

See cable drawing for details.

Settings in the X-Link interface

Select the proper settings for Radio A or Radio B in the X-Link setup software, depending on how you connect to the interface.

- Radio with squelch output for Rx detect



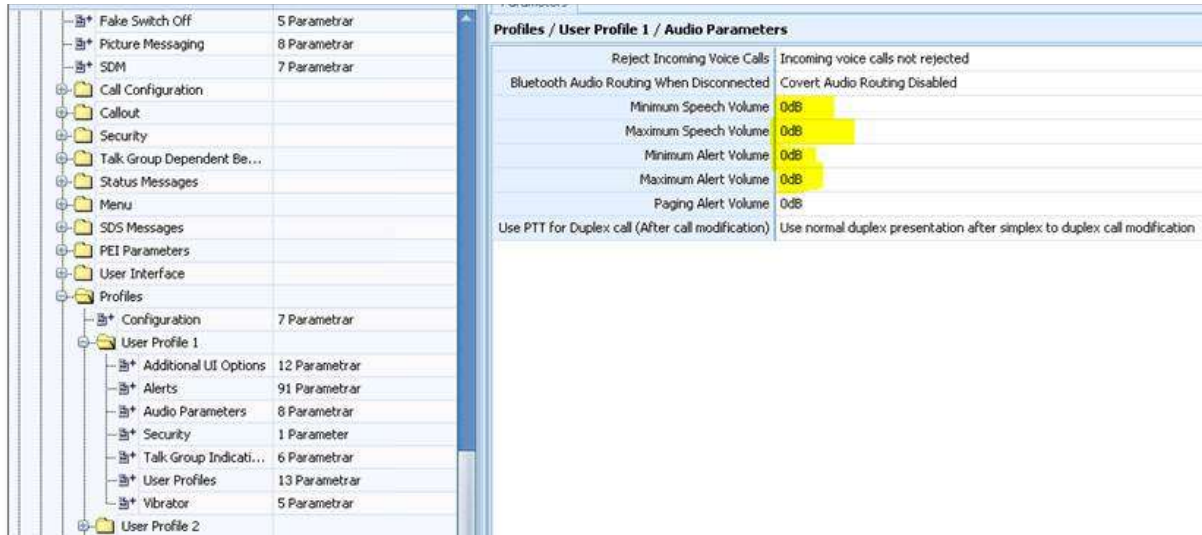
Part of the Configuration software window

Check/adjust the audio levels in both directions in the interface so that the users can hear the X-Link with the same level as when listening to other radios.

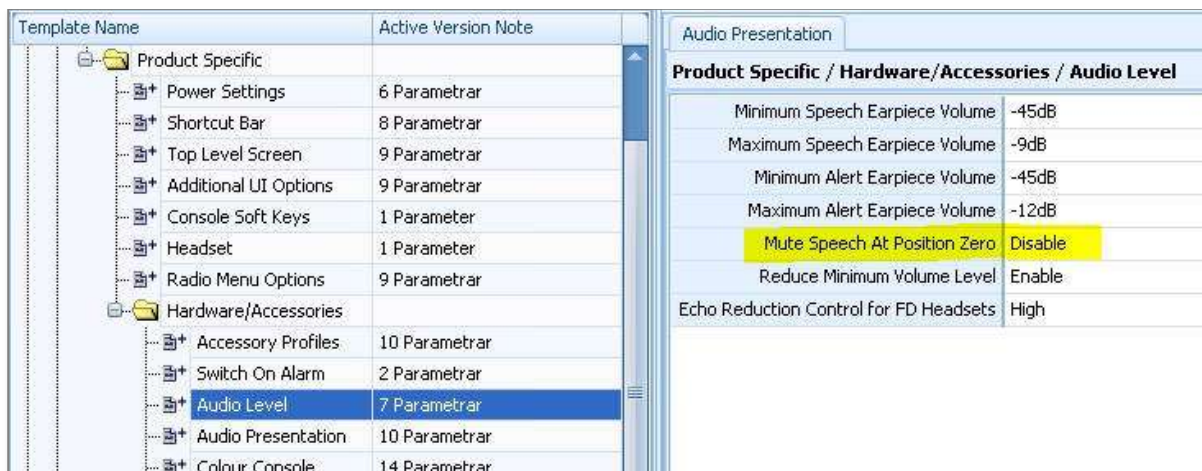
See the X-Link setup manual for details on setting the audio level.

Programming tips

To get a fixed audio level out of the radio to the interface. Set all volumes to 0dB.



To make sure that the audio is not muted when the knob is in zero position. Disable the “Mute speech...” function.



Power Connection

Use the “Ignition Sense” cable to make certain that the radio starts when power is connected.

Programming specific for using SCG22

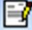
Important is that the line out source is turned on.
"RX Audio Only", and "When Line out source audio present":

Redigera mall	
Redigera mallparametrar och tryck <Spara> för att lagra...	
Audio Presentation Acoustic Echo Cancellation	
Product Specific / Hardware/Accessories / Audio Presentation	
Loudspeaker Gain Relative to Earpiece	0dB
Bluetooth Headset Mic Gain	9dB
Loudspeaker On/Off Soft Key behaviour	Loudspeaker On/Off
Audio Presentation Flags	(Duplex) Accessory Public Audio - Enable
Duplex Accessory Public State Soft Key Persistence	Use Audio Presentation Flags LS setting
Line Out Source	Rx Audio only
Line Out Operation	When Line Out Source audio present
Alert Attenuation Relative to Speech	-3dB
Gain Setting for Line In Audio	15dB
Line In Audio Device Features	
Transmitter Voice Compression	Medium

Set PTT (orange) to Input 2, Line-in 1:

Redigera mall	
Redigera mallparametrar och tryck <Spara> för att lagra...	
External Digital Inputs Expansion Board Digital Inputs	
Product Specific / Hardware/Accessories / External Digital Inputs	
Transceiver External Digital Input 1, + edge	No Function
Transceiver External Digital Input 1, - edge	No Function
Transceiver External Digital Input 2, + edge	Line-In 1 PTT Off
Transceiver External Digital Input 2, - edge	Line-In 1 PTT On
Console/AIU on Console Interface 1 External Digital Input 1, + edge	No Function
Console/AIU on Console Interface 1 External Digital Input 1, - edge	No Function
Console/AIU on Console Interface 1 External Digital Input 2, + edge	No Function
Console/AIU on Console Interface 1 External Digital Input 2, - edge	No Function
Console/AIU on Console Interface 1 External Digital Input 3, + edge	No Function
Console/AIU on Console Interface 1 External Digital Input 3, - edge	No Function
Console/AIU on Console Interface 2 External Digital Input 1, + edge	No Function
Console/AIU on Console Interface 2 External Digital Input 1, - edge	No Function
Console/AIU on Console Interface 2 External Digital Input 2, + edge	No Function
Console/AIU on Console Interface 2 External Digital Input 2, - edge	No Function
Console/AIU on Console Interface 2 External Digital Input 3, + edge	No Function
Console/AIU on Console Interface 2 External Digital Input 3, - edge	No Function

Set Squelch (pink) to Output 1:

 **Redigera mall**

Redigera mallparametrar och tryck <Spara> för att lagra...

External Digital Outputs Expansion Board Digital Outputs

Product Specific / Hardware/Accessories / External Digital Outputs

External Alert Operation Digital Output 1	Active while Line Out enabled
External Alert Operation Digital Output 2	Disabled
External Alert Operation Digital Output 3	Disabled
External Alert Operation Digital Output 4	Disabled
External Alert Activation Time	2
Alarm External Alert Time	0
Digital Output 1 Pulse Length	0,15
Digital Output 4 Pulse Length	0,15