

X-Link Cable kit 3353

**Connect a Sepura SRG through the
AIU box to Mimer X-Link MK2**

Also refer to the X-Link setup manual.

Interface Power Supply

12VDC / max 0,3A.

Power connection through separate cable delivered with the interface. Red is positive.

Radio Setup

The standard control head does not need to be fitted to the radio.

In the control head port used on the radio, the PEI port needs to be active.

You should program a fixed audio level, see programming tips further down.

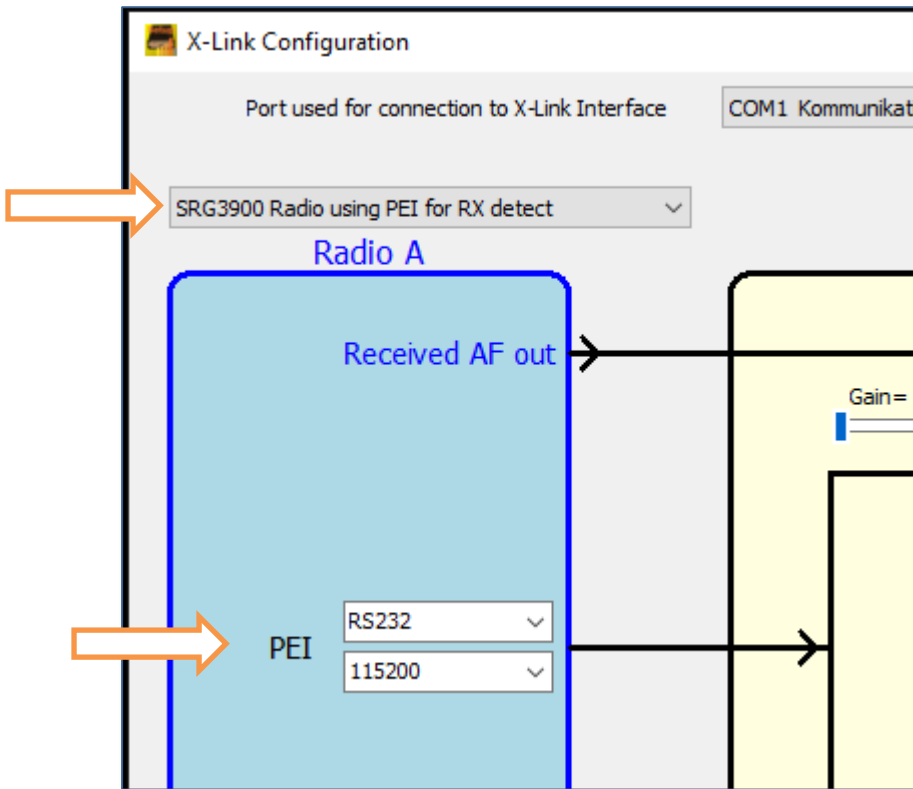
Connection

The cable kit is connected in the AIU-box, with the 10-pin connector and the 15-pin high density D-Sub.

Settings in the X-Link interface

Select the proper settings for Radio A or Radio B in the X-Link setup software, depending on how you connect to the interface.

- SRG3900 Radio using PEI for Rx detect
- RS232
- 115200 Baud



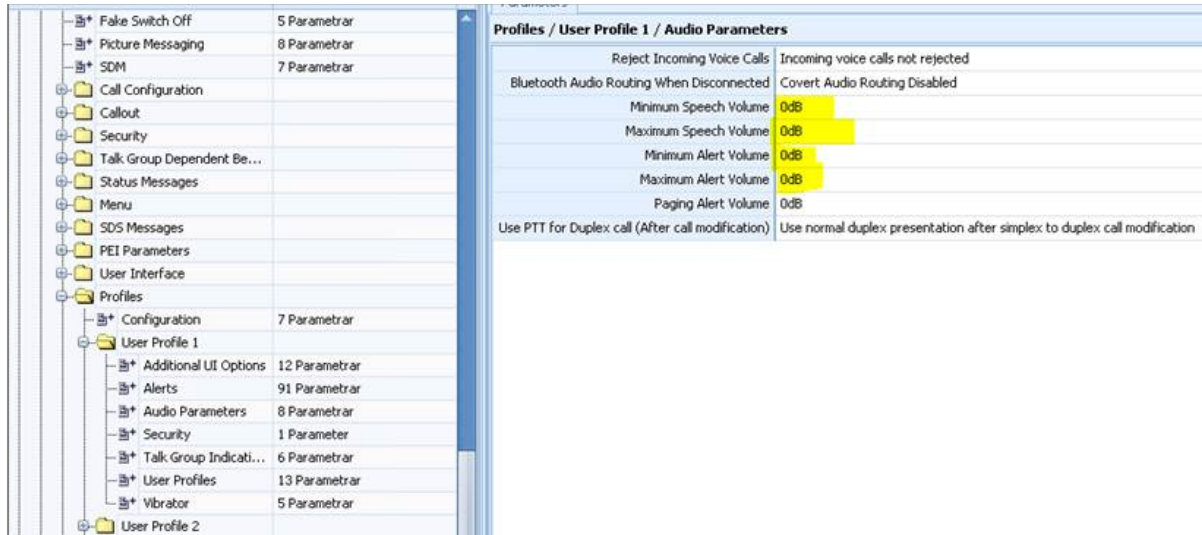
Part of the Configuration software window

Check/adjust the audio levels in both directions in the interface so that the users can hear the X-Link with the same level as when listening to other radios.

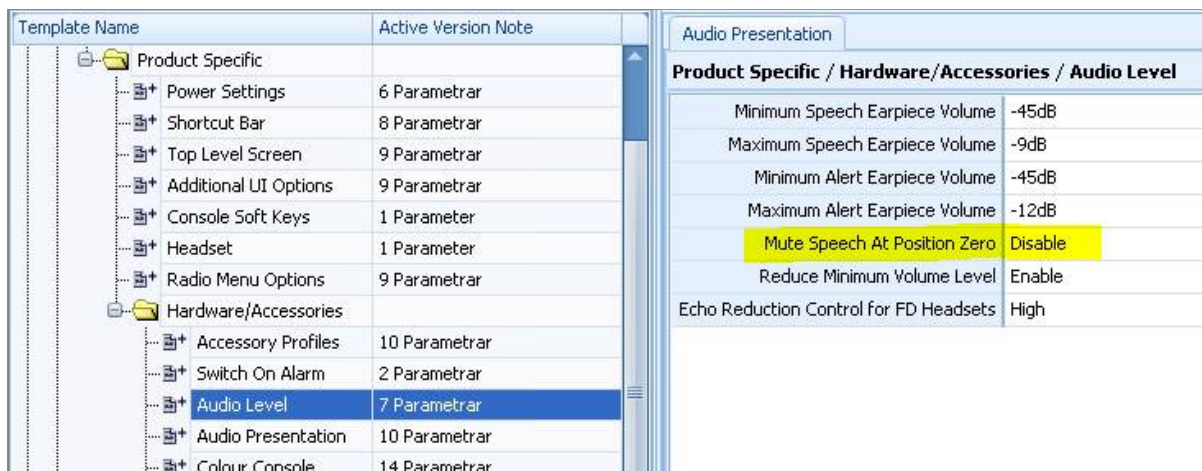
See the X-Link setup manual for details on setting the audio level.

Programming tips

To get a fixed audio level out of the radio to the interface. Set all volumes to 0dB.



To make sure that the audio is not muted when the knob is in zero position. Disable the “Mute speech...” function.



Power Connection

Use the “Ignition Sense” cable to make certain that the radio starts when power is connected.