

Connect a Sepura SRG to Mimer X-Link

Interface Power Supply

+12VDC / max 0,3A.

See wiring diagram on the following page.

Radio setup

The standard control head, or the AIU-box, needs to be fitted to the radio.

In the control head port used on the radio, the PEI port needs to be active.

You should program a fixed audio level, see programming tips further down.

Connection

The cable kit is connected through the 8-pin and the 10-pin connector on the back side of the control head.

Or in the AIU-box, with the 10-pin connector and the 15-pin high density D-Sub.

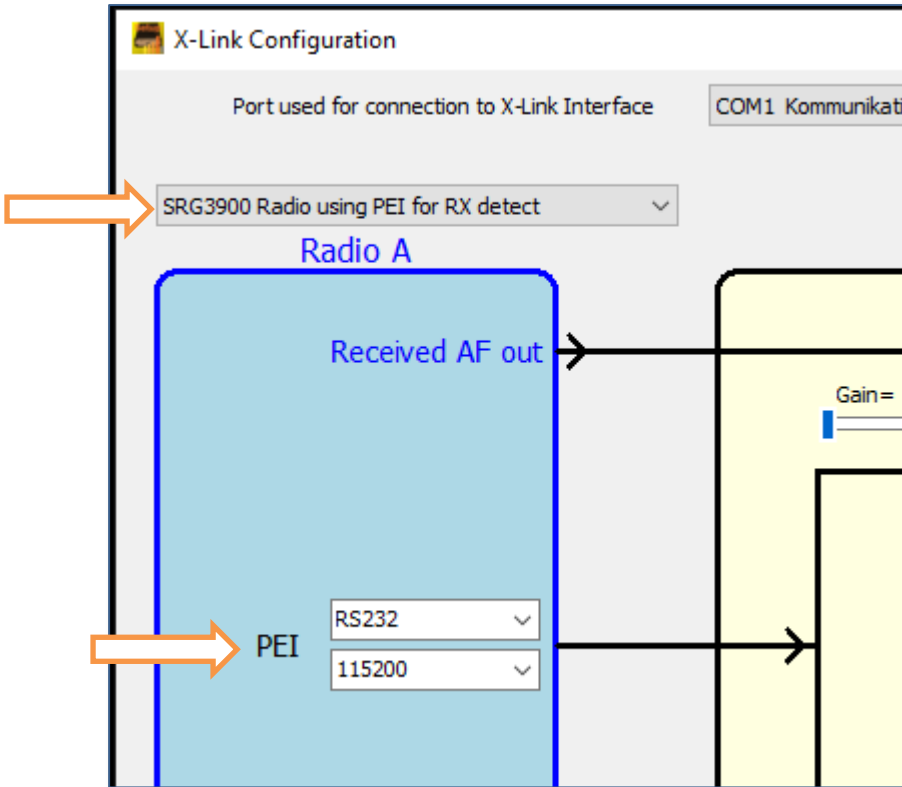


Backside of control head

Settings in the X-Link interface

Select the proper settings for Radio A or Radio B depending on your connection.

- SRG3900 Radio using PEI for Rx detect
- RS232
- 115200 Baud



Part of the Configuration software window

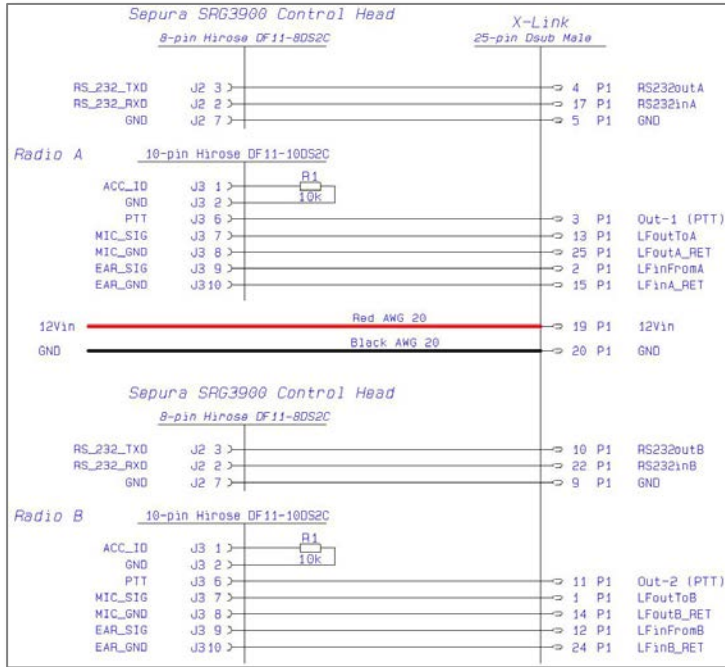
Check/adjust the audio levels in both directions in the interface so that the users hears the X-Link with the same level as when listening to other radios.

See the X-Link setup manual for details on setting the audio level.

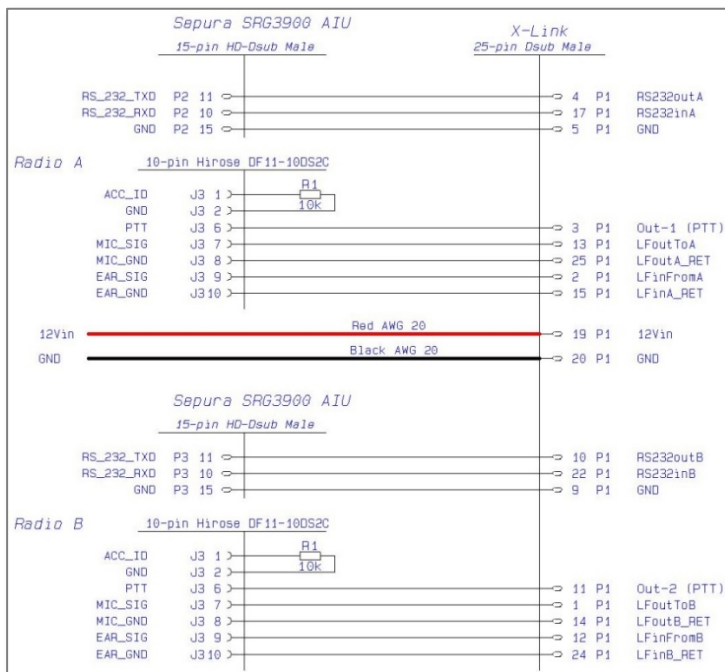
Connection Cable:

Select the proper configuration below depending on if your radio will be connected as Radio A or Radio B to the X-Link interface.

Connected in the SRG Control Head

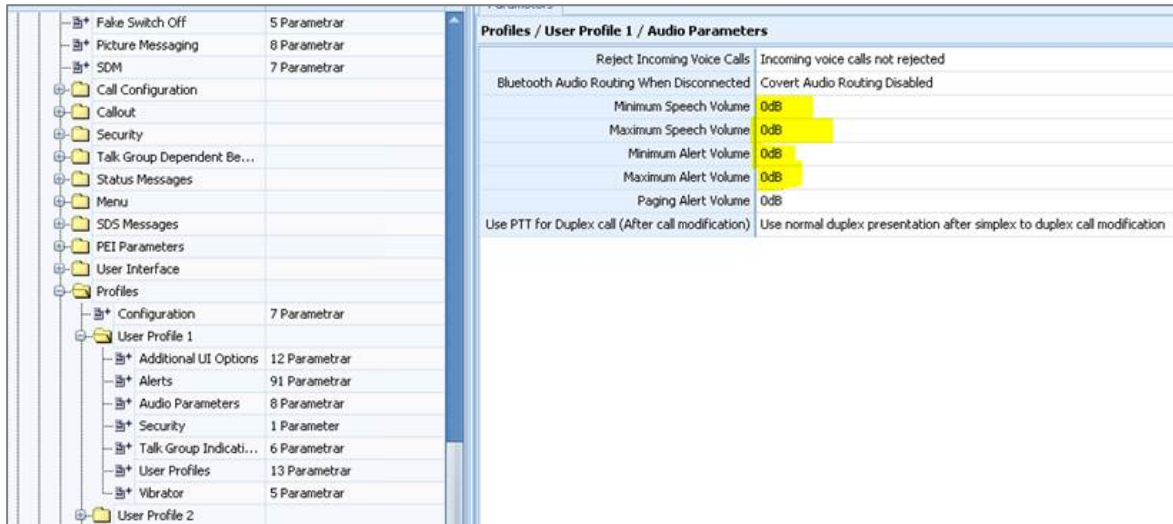


Connected in the AIU Box

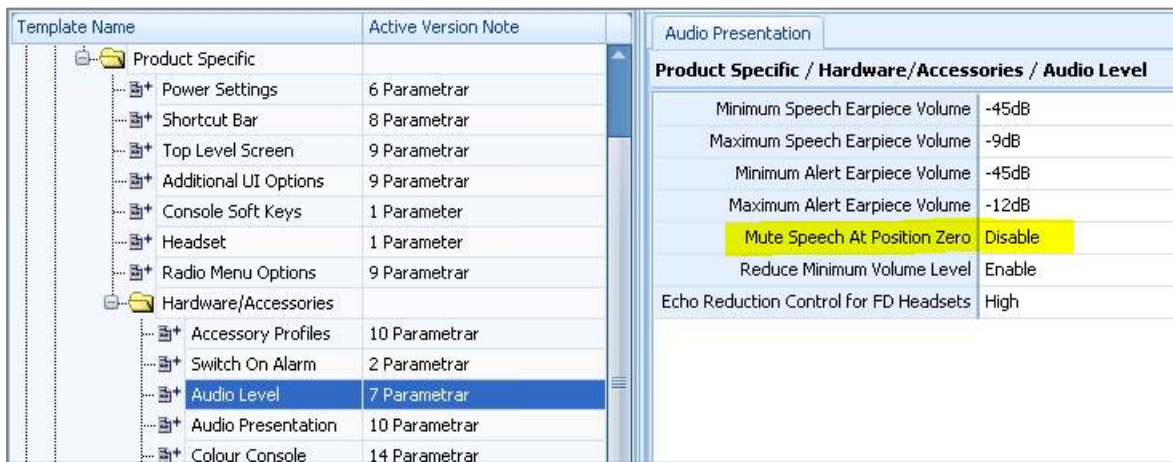


Programming tips

To get a fixed audio level out of the radio to the interface. Set all volumes to 0dB.



To make sure that the audio is not muted when the knob is in zero position. Disable the "Mute speech..." function.



Power Connection

Use the "Ignition Sense" cable to make certain that the radio starts when power is connected.